

# THE CIMARRON URUGUAYO



Sanna Södergren

[www.sannas.deviantart.com](http://www.sannas.deviantart.com)

# ORIGIN OF THE BREED

By natural selection, product of the inter-breeding of the dogs introduced by the Spanish and Portuguese conquerors.

Probably the result of the breeding between Mastins and sighthounds.



1627 The first complaint is recorded at the Goberment house for the ravages caused by Cimarron dogs not domesticated, living in the nature.

1762 The goverment gives the order to exterminate the dogs.

1795 300.000 dogs were reported killed by ofical documentation.

Some of the survivors hidden themselves in the forest, they got to be domesticated by farmer and gauchos out in the country side, to whom we owe to mantain alive this beautifull breed.



In 1969 was the first Kennel Club Uruguayo show where Cimarrons were showed.



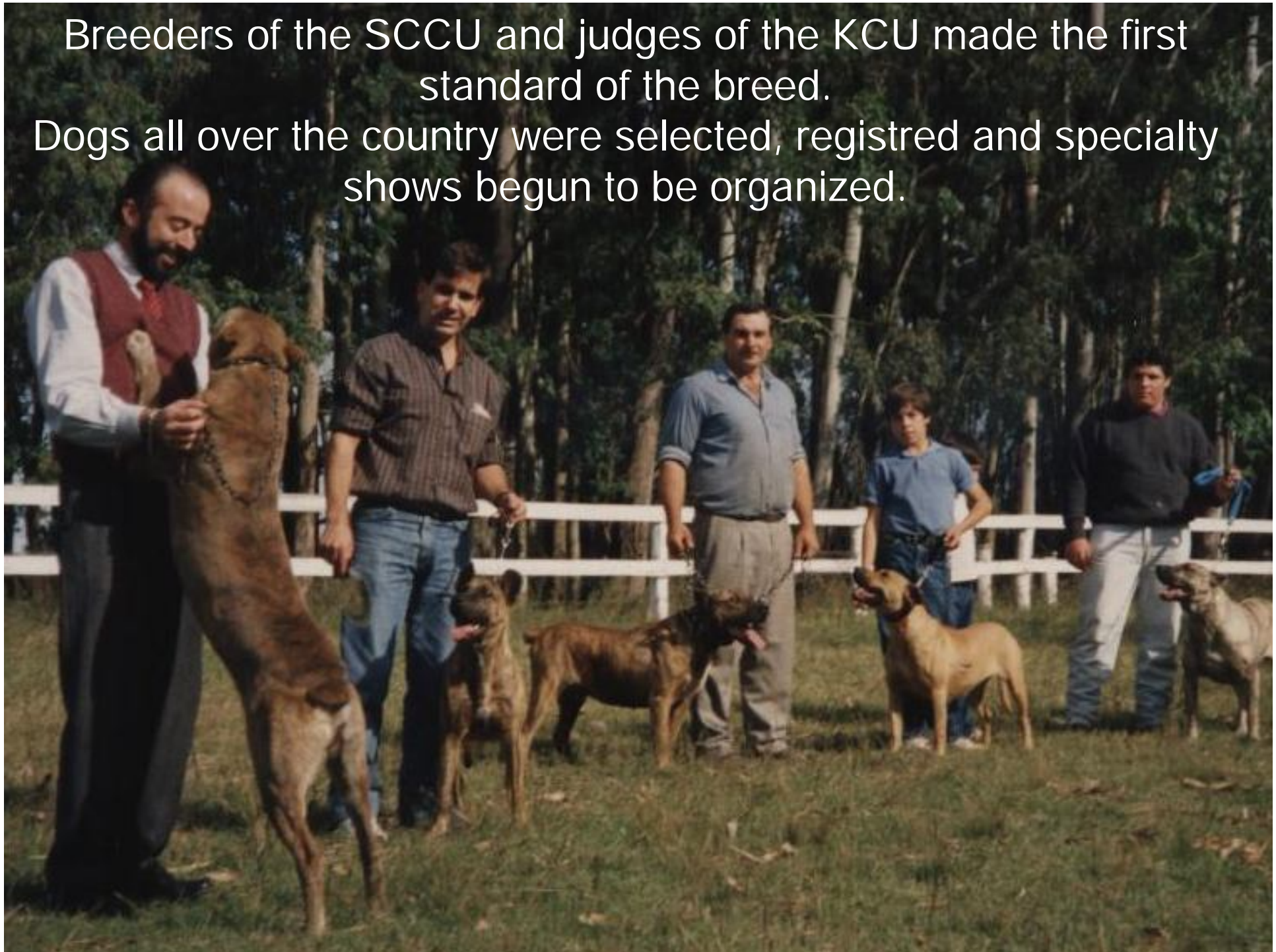
*Melo city – Judge Julio Vazquez, exhibitors Mrs. Pecoste and Mr. Silvera*

On October 12, 1988 The Cimarron Breeders Association was founded.



Breeders of the SCCU and judges of the KCU made the first standard of the breed.

Dogs all over the country were selected, registered and specialty shows begun to be organized.



DOGUE TYPE - MEDIUM SIZED - STRONG  
COMPACT



WITH GOOD BONES - WELL MUSCLED - AGILE

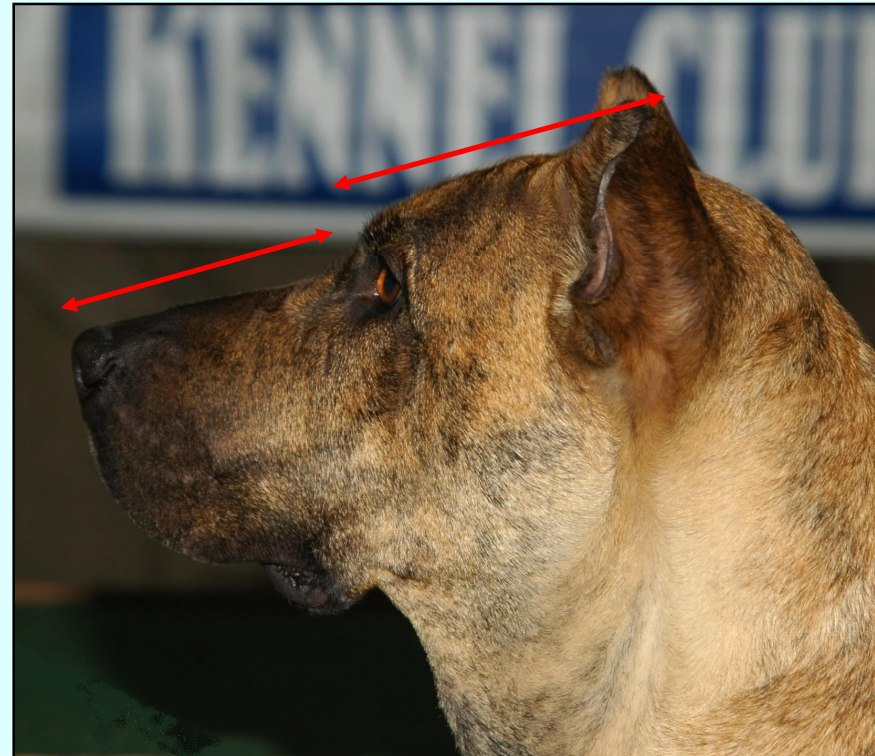
# IMPORTANT PROPORTIONS

Height at withers : body length 10:11

Height at withers equal to height at croup.

Muzzle only slightly shorter than skull.

Height to elbow same as height from elbow to withers





# TEMPERAMENT – BEHAVIOUR

**BALANCED**

**INTELLIGENT**



**GREAT COURAGE**

## HEAD:



## SKULL:

WIDER THAN LONG

OCCIPUT SLIGHTLY  
PRONOUNCED





## **STOP:**

Moderate

## **MUZZLE:**

Powerful, medium width  
Slightly shorter than skull.

## **NOSE:**

Broad  
Black

**Or** (In concordance  
with color of the coat.





### **Lips:**

Upper lip covers lower lip but is not hanging.

### **Jaws:**

Strong, powerful and well defined.

### **Teeth:**

Strong, well aligned and complete. (42).

Scissor bite.

**Cheeks:** Well developed, not bulging

## EYES:

Medium size  
Almond shape  
Inquisitive expression.



Any shade of brown and in accordance with coat color,  
the darker the better.

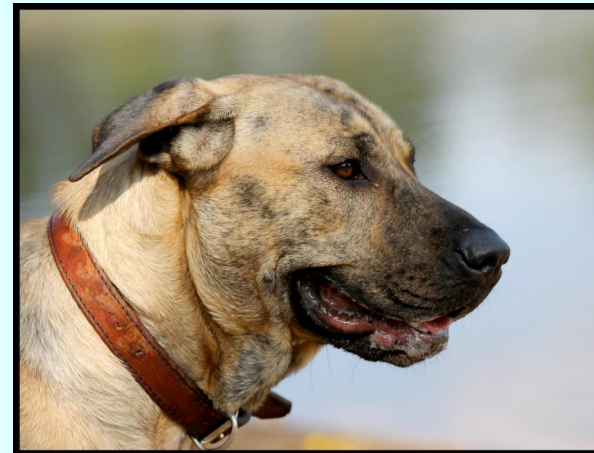
Eyelids tightly fitting eyeball and fully pigmented.



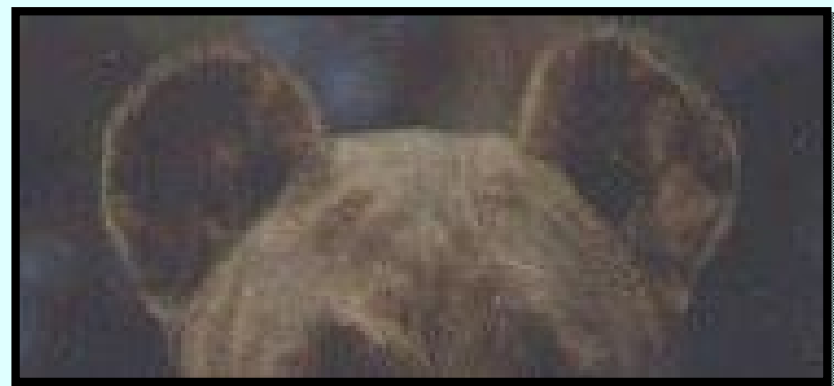
## EARS

Triangular, medium size and set.

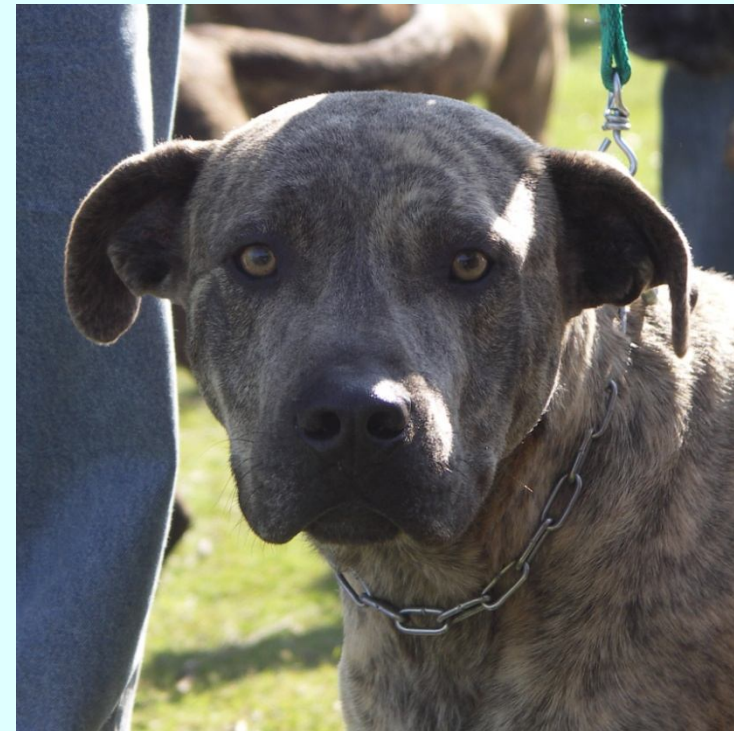
Dropping or in rose shape. When dropping not close to the cheeks.



May be cropped, round in shape looking like puma ears, never more than half of their length.



# Wrong heads



## TOP LINE

Height at withers is the same as height at the croup.



**Neck:** Strong, well muscled, not too long.

**Withers:** well defined

**Top line level** or slightly saddle-backed

**Loin:** short, strong, slightly arched.





**Forechest  
well defined**

**Croup: Of good length. Broad  
Sloping 30°**

**Ribs: well sprung, not barrel shape**

**Chest: Deep, reaching at least to the elbow.  
Broad and well developed.**

Incorrect body



# FOREQUARTERS:



**Straight and parallel**

**Strong bone**

**Upper arms same length  
As the shoulder blades.**

**Elbows neither turned in nor out**



**Shoulder blade well laid back**

**Pasterns from the side  
Slightly sloping**

**Front feet: oval shaped, well-knit toes and strong pads.**

# INCORRECT FRONTS



## HINDQUARTERS: Well muscled and powerful



Upper thighs well developed.

Stifles well angulated.

Rear pasterns firm of medium length.

Hind feet, cat feet with strong pads.

## TAIL:

Thick  
Medium set.  
Reaching the hock.



# Incorrect rears



# GAIT / MOVEMENT:

- Effortless.
- With good reach in front and good drive behind.
- Seen from the front and from behind the legs are parallel.
- Single tracking when speed increases.





**SKIN:** Thick and supple.

**COAT:** Short hair, smooth, close to the body with undercoat.

**COLOR:** Brindle or all shades of fawn, with or without mask. Fawns may have black shadings. White marks are allowed in underjaw, lower part of neck, forechest, abdomen and lower part of legs.







## SIZE AND WEIGHT:

**Dogs:** 58 – 61 cm. ( 2 cm tolerance)

38 a 45 kg.

**Bitches:**55 – 58 cm. (2 cm tolerance.)

33 a 40 kg.



## Faults:

- Any departure from the foregoing points should be considered a fault and the seriousness with which the fault should be regarded should be in exact proportion to its degree and its effects upon the health and welfare of the dog.

## Severe faults:

- Notorious deviation from the important proportions.
- Absence of sexual dimorphism.
- Lips excessively pendulous at corners.
- Excessive dewlap.
- Cheeks too prominent.
- White markings with the exception of those mentioned before.
- Size under or over the stipulated height including the tolerance.
- Sporting topline

# DISQUALIFYING FAULTS

- Aggressive or overly shy.
- Clear lack of type
- Undershot.
- Overshot
- Nose depigmentation
- Long hair
- Any other color not mentioned, including genetic brown (chocolate) brindle or not.
- Any dog clearly showing physical or behavioral abnormalities shall be disqualified.

On December 2004 with great pride and emotion more than 130 Cimarrons were presented to the FCI







# World dog show Argentina 2005



The Cimarrón  
Uruguayo breed was  
showed for the very first  
time to the world



DOGS WORLDWIDE

February 24th, 2006



FEDERATION  
CYNOLOGIQUE  
INTERNATIONALE







*Thank you !*

*Adrián Landarte - Jorge Nallem*